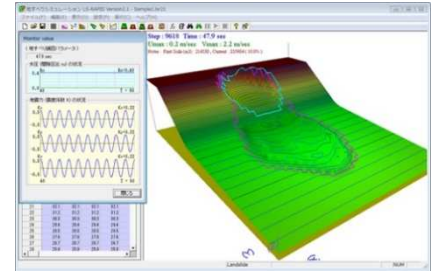


# Integrated Landslide Simulation Model

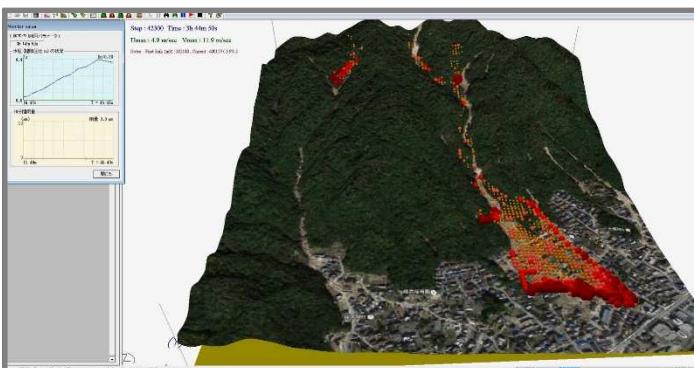
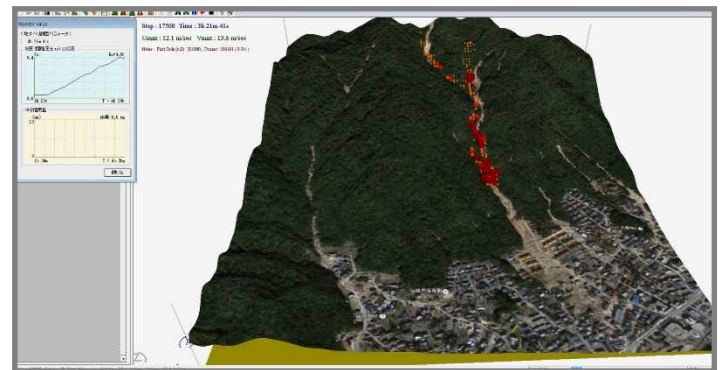
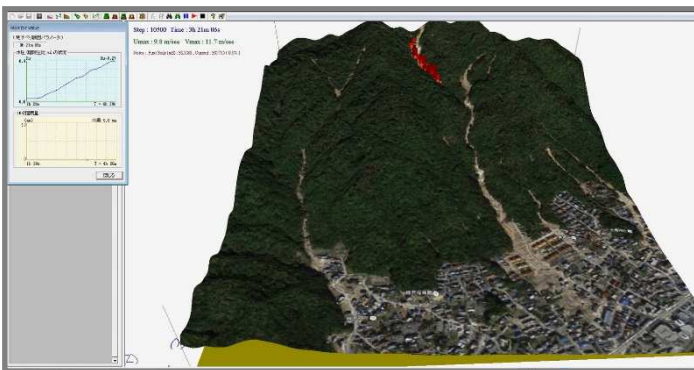
# LS-RAPID

## Reproduction and Prediction of Landslide Collapse

If this slope collapses,  
how far will the collapsed sediment reach?  
We have no clear answer to this question so far.  
This simulation program provides a clear  
answer to these questions.



## Reproduction analysis results of the Hiroshima landslide caused by the torrential rain in August



※ From the presentation materials of the International Forum "Urbanization and Landslides"

【 Production 】

**ICL**

( International Consortium on Landslides )

【 Sale 】



**GODAI KAIHATSU Co.,Ltd.**